

FuturElevate

Curated.

Hands-on.

Experiential.

Dynamic.

Holistic.

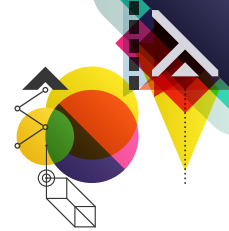


PGDM 2024-2026

2 year full-time AICTE-approved Course

S. P. Mandali's Prin. L. N. Welingkar Institute of Management Development & Research (PGDM) (WeSchool)

WESCHOOL MUMBAI



WeSchool Mumbai has a campus that is a hotbed of thriving new thoughts, ideas and enterprise. State-of-the-art facilities like complete wi-fi, Innovation and Leadership Labs form an integral part of teaching methodology along with other new age learning tools.

PROGRAM OFFERINGS

PGDM - 180 seats (started in 1994)

The PGDM program is a comprehensive business management course offering specializations in Finance, Marketing, HR and Operations.

PGDM - E-Business - 120 seats (started in 2007)

It is a techno-commercial program which is a fine blend of management and information technology addressing the needs of dynamic sectors like Consulting, IT, Banking, Insurance, FMCG and Financial Services. Specializations offered in Finance, Marketing, Operations, and HR.

PGDM - Business Design - 60 seats (started in 2008)

The program covers all aspects of Management and integrates concepts like innovation, creativity and design thinking into mainstream management system.

PGDM - Healthcare - 60 seats (started in 2011)

The program combines disciplines of Business Management and Healthcare. The learning process involves academic training in theory with practical application across different domains in Healthcare industry.

PGDM - Rural Management (Emerging Economies)

60 seats (started in 2012)

The major distinguishing feature of the program provides a dedicated practical exposure to work effectively in the emerging rural economies. The students are allowed to choose within a bucket of domain related courses of their choice along with Rural focused courses that give deeper knowledge of a rural facing business vertical.

PGDM - Retail Management

60 seats (started in 2012)

The program provides a comprehensive view of the retail industry along with functional specializations across Marketing, Finance, HR and Operations.

PGDM - Research & Business Analytics

120 seats (started in 2016)

The program covers the emerging analytical tools and techniques along with business applications. It also covers statistical and operations research techniques, machine learning, big data, business intelligence, blockchain, cloud computing, artificial intelligence, IOT, cognitive technology, R and Python.

PGDM - Media & Entertainment

60 seats (started in 2016)

The synergistic program is intense and stimulating. We inspire the learner to explore media from a content creation framework to content management. It aims to create a manager who is not only aware about the nuances of entertainment biz but also has a skill-set to lead businesses in advertising, digital media marketing and production.

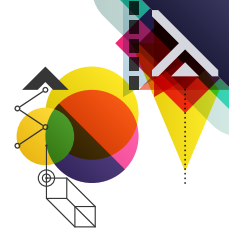


OUTLOOK

WeSchool ranked 16th in private
B-Schools nationally, 4th in West Zone
and 1st in Mumbai by Outlook (2023 Ranking)



National Institutional Ranking
Framework (NIRF) 2023 ranked WeSchool,
Mumbai 73rd in Management Category



WESCHOOL BENGALURU

The WeSchool campus situated in Bengaluru, the Silicon Valley of India is designed to nurture Design Thinking and Innovation. The campus layout has state-of-the-art facilities that facilitate the right environment for learning with the help of academically reputed faculty.

PROGRAM OFFERINGS

PGDM - 60 seats (started in 2009)

The program's multi-disciplinary learning offers a fine blend of General Management and functional specialisations in Marketing, Finance, Human Resources and Operations. It aims to nurture you as a competent future manager with leadership abilities and an innovative mindset with an exposure to real-life business scenarios.

PGDM - Business Design & Innovation

30 seats (started in 2010)

The program is a fine blend of management and design disciplines. The student is exposed to the basic theories of management (in broad areas of Finance, Marketing, HR and Operations), like principles of Marketing, Organisational Behaviour, Cost and Management Accounting, HR Management, Operations Research and Design subjects like tools for innovators, design in business, info-graphics, UX design and much more.

PGDM - E-Business - 120 seats (started in 2010)

The PGDM E-Business program primarily aims at nurturing a class of managers and leaders who have a strong foundation in business along with knowledge and experience on a wide range of digital technologies. The major distinguishing feature of the two-year program is the unique pioneering curriculum which provides insights into digital convergence and specialisations in Marketing, Finance, Human Resources and Operations.

PGDM - Research and Business Analytics

60 seats (started in 2020)

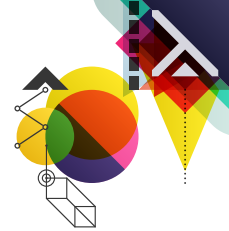
The program has been designed to provide a skill development journey from learning fundamentals and basic concepts of Analytics to data-driven strategic decision making across various business functions. It encompasses learning from fundamentals of Statistics & Probability to application of various Machine Learning algorithms in solving business problems. It exposes the learner to various data mining techniques; trains to build the story on data through data visualization; and equips the student with the knowledge of various analytics tools & language including R, Python, SPSS, Tableau, Power BI, JASP, BlueSky, Microsoft Excel, Knime to name a few.



WeSchool (Bengaluru) has been accredited by SAQS (South Asian Quality Assurance System) awarded by 'The Association of Management Development Institutions in South Asia' (AMDISA)



WeSchool Bengaluru ranked 34th in Private B School nationally by India Today magazine 2023



PLACEMENT STATS

Mumbai (2021-2023)

Maximum Salary

₹25.48

LACS PA

Top 50

₹17.91

LACS PA

Median Salary

₹11.80

LACS PA

Top 100

₹16.01

LACS PA

Average Salary

₹12.01

LACS PA

Top 200

₹14.60

LACS PA

Ongoing placement of batch 2021-2023

Mumbai (2020-2022)

Maximum Salary

₹18.00

LACS PA

Top 50

₹14.30

LACS PA

Median Salary

₹9.83

LACS PA

Top 100

₹13.30

LACS PA

Average Salary

₹10.05

LACS PA

Top 200

₹12.20

LACS PA

Top Companies on Campus

- Adani Wilmar Ltd
- Amazon
- Accenture Technology Ltd
- Cognizant Technology Solutions
- Capgemini
- CBRE
- Citi
- Deloitte USI
- Darashaw
- Deutsche Bank
- EY
- HDFC Bank
- ICICI Bank
- JLL
- KPMG Global Services
- Michael Page
- Morgan Stanley
- Schneider Electric
- Tata Capital
- Vedanta
- Viacom

Bengaluru (2021-2023)

Maximum Salary

₹18.20

LACS PA

Top 50

₹11.50

LACS PA

Average Salary

₹10.20

LACS PA

Top 100

₹11.80

LACS PA

Median Salary

₹10.00

LACS PA

Top 150

₹10.20

LACS PA

Ongoing placement of batch 2021-2023

Begaluru (2020-2022)

Maximum Salary

₹13.69

LACS PA

Top 25

₹10.08

LACS PA

Average Salary

₹9.33

LACS PA

Top Companies on Campus

- ABC Consultants
- Accenture
- ACT Fibernet
- Arcolab
- Ather Energy
- CCD
- DELL
- Deloitte USI
- Digit
- Happiest Minds
- ICICI Bank
- ICICI Prudential AMC
- ICICI Securities
- Infosys
- Indegene
- Kotak Bank
- MG Motors
- Mercedes Benz
- Oracle
- PwC India
- Randstad
- Sales Force
- Schneider Electric
- South Indian Bank
- Teamlease
- TechM
- TVS Motors
- Volvo Eicher Commercial
- Wildcraft
- Wipro
- Yes Bank



“Welcome to WeSchool where a new paradigm of dynamic learning, innovation, and transformation awaits you.

Prof. Dr. Uday Salunkhe, Group Director, WeSchool

”

INTERNATIONAL PARTNERSHIPS

- Audencia Nantes, France
- Ben-Gurion University of the Negev, Beer-Sheva, Israel
- Copenhagen Business School, Denmark
- Curtin University, Australia
- Grand MacEwan College, Canada
- Hochschule der Medien, University of Applied Sciences, Stuttgart, Germany
- IDC Herzliya, Israel
- IESEG School of Management, France
- Malardalen University, Sweden
- Otto Fredrich Universitat, Bamberg, Germany
- Sogang University, South Korea
- Trade and Investment Queensland, Australia
- Tel Aviv University, Israel
- University of Haifa, Israel
- University of Lincoln, UK
- University of Western Australia, Australia
- VHL University of Applied Sciences, Netherlands
- Steinbeis School of Management & Innovation GmGH, Institute of Executive Capabilities (IEC) & Berlin School of Creative Leadership GmbH (BSCL)
- Indobox Inc., Japan
- TSUCREA, Japan

STUDENT ACHIEVEMENTS (Mumbai)

- Prathamesh Rege from PGDM Media Entertainment 21-23 batch won the Best Student Speaker award at the IMC Conference.
- Team ALJKAS from PGDM 2021-23 batch won the National Champions of the KPMG Ideation. The ALJKAS were representing Team India in the International rounds of KPMG Ideation challenge
- SWIFT Institute Student Challenge 2021 India won by students of PGDM 2020-22 batch
- Ms. Disha Patil from PGDM Healthcare Management 2019-21 batch, secured 'Third position' at Business Standard Best B-School Project Award 2020

STUDENT ACHIEVEMENTS (Bengaluru)

- Abhay Singh (PGDM E-Business 2020-22)-TVS Credit E.P.I.C Campus Challenge
- Vidhi Choubey, Nishtha Jain (PGDM 2022-24)-Marketing Event Organized by Jain University, Bengaluru
- Prasad Vallabh Mulay, Rahul Guwalani, Vidushi Kumar (PGDM E-Business 2021-23)-Winners- 'Pitch Tank' organised by E-cell of Goa Institute of Management, Goa.
- Pranav Anand (PGDM (PGDM BDI 2022-24)-Winner-Best Manager, Organized by ISME.

Global Citizen Leadership Program (Mumbai & Bengaluru)

DIGNITARIES AT MUMBAI



'The Global Learning Series' had Prof. Sameer Deshpande from Griffith University, Australia, share insights on Corporate Social Marketing



Renowned researcher Dr. Werner Reinartz from the University of Cologne had a Masterclass on February 8, 2023, & addressed faculty on "How to craft a great manuscript for publication?"

DIGNITARIES AT BENGALURU



Faculties from Malardalen University, Sweden - Prof Christer Nygren, & Prof Annet Stromberg



Ms. Shruthi Bopaiah Global Head - Marketing, Communications & Culture, Bridgeweave Ltd) ABG



ADMISSIONS OPEN

for 2 years PGDM Programs at Mumbai and Bengaluru

Campus for 2024 - 2026 (Recognized by AICTE)

For more information on program offerings, tests accepted and selection process log on to **www.welingkar.org/pgdm** or Scan QR code below



Eligibility:

Candidates with minimum 50% in Degree exam from a recognised University.
Final year students awaiting results may also apply.

Test Accepted:

CAT 2023 / CMAT 2024 / XAT 2024 / ATMA 2024 / GMAT 2021 onwards.

Tuition Fee:

Tuition Fee Rs. 7,00,000/- p.a. (Subject to change)

Apply online on www.welingkar.org

Contact Details

S. P. Mandali's Prin. L. N. Welingkar Institute of Management Development & Research (PGDM) (WeSchool)

Mumbai Campus:

022-24198400 / 700 / 8452062782 /
9137282627 / 9321875551

Bengaluru Campus:

9886440456 / 080-42678300

Delhi: 09212171051

Kolkata: 09830277120

***WeSchool is the brand identity of Prin.L.N.Welingkar Institute of Management Development and Research (WeSchool) which is the legal entity of the institute.

No donation or capitation fees is charged for admission to any of our Programs. Nor is anyone else authorised to collect any donation or capitation fees on our behalf.